
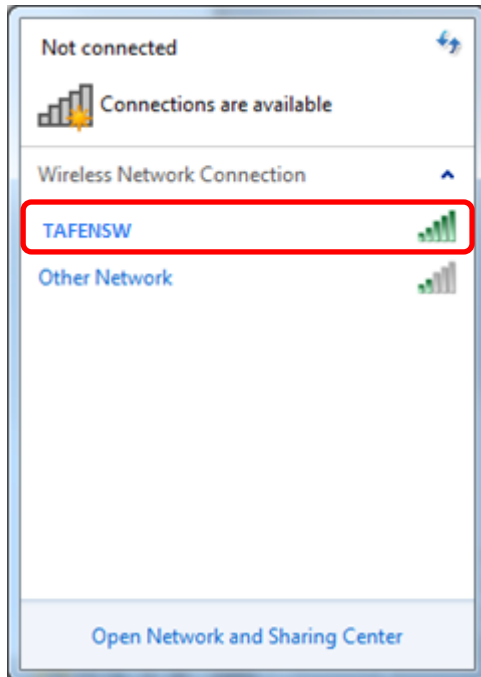


**Background** This document will show you how to connect to the TAFENSW wireless network on a Windows 7 device.

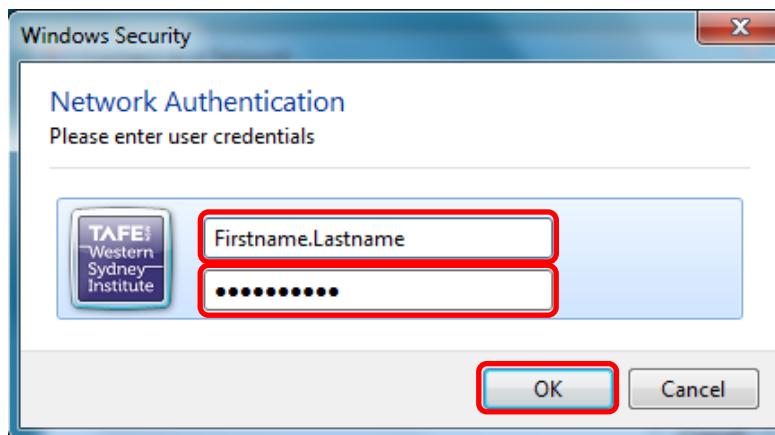
1. Select the wireless Icon  found in the bottom right hand corner
2. Select "TAFENSW"



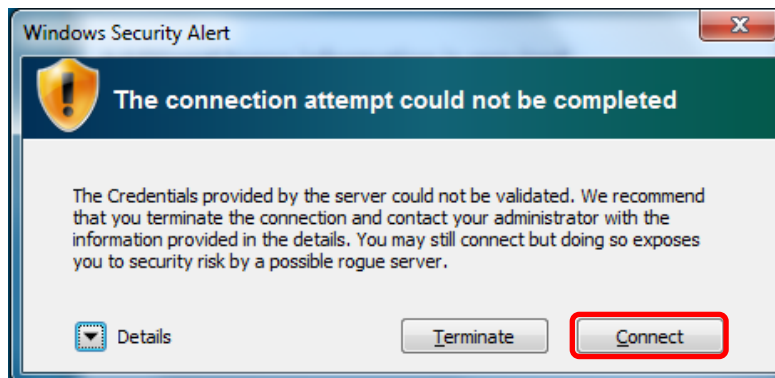
3. Click "Connect"



4. When prompted for network authentication, enter your *TAFE Portal Username*, EG: *Firstname.Lastname* and current password and then click "OK"



5. A Windows Security Alert prompt will appear. Click "Connect"



6. You are now connected to the "TAFENSW" wireless network